

## DAVS

### P TRQ Explosion proof series valve actuators



## 1. Main Data

### 1.1 P TRQ Series Data

Model	Max Torque	Open/Close Time	Motor	Rated Current( A) 50Hz				Manual Handwheel Turns	Weight
				Single Phase		Triple Phase			
	N.M	S	W	110V	220V	380V	440V	N	Kg
P TOE-10	100	16	25	0.82	0.41	0.25	0.26	10	11
P TOE-15	150	16	40	1.62	0.83	0.4	.026	11	11.5
P TOE-20	200	20	40	1.62	0.83	0.4	0.26	11	14
P TOE-30	300	26	60	1.96	0.98	0.45	/	13.5	19.5
P TOE-40	400	26	90	2.4	1.2	0.6	/	13.5	20
P TOE-50	500	26	120	2.62	1.31	0.75	/	13.5	20.5
P TOE-60	600	43	120	2.62	1.31	0.75	/	16.5	32
P TOE-100	1000	43	200	3.58	1.79	1.2	/	16.5	32.5
P TOE-200	2000	85	200	3.58	1.79	1.2	/	49.5	55

### 1.2 Specifications

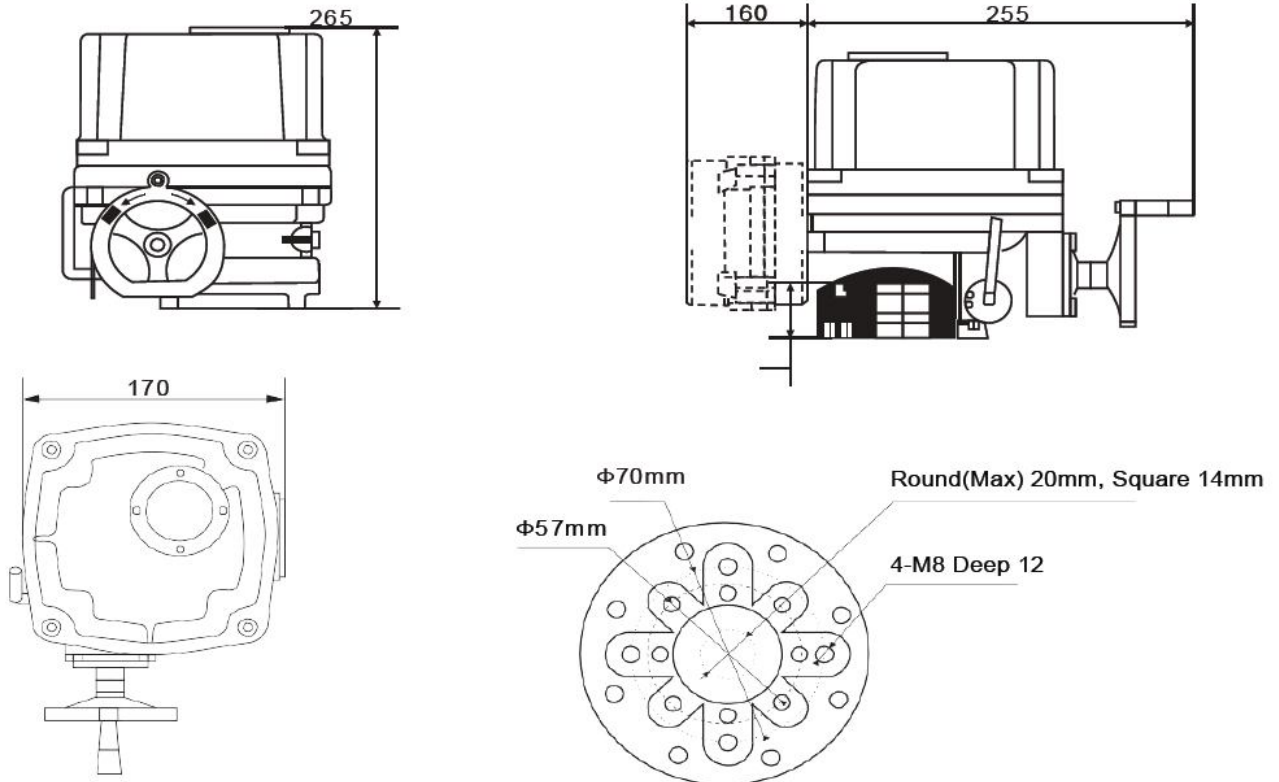
Shell	Waterproof level IP 67,NEME 4 and 6
Motor power	110/220v AC 1 phase, 50 / 60 Hz, ±10 %
Motor	Squirrel cage induction motor
Limit switch	Open/Close,2×SPDT,250V AC 10A
Auxiliary Limit Switch	Open/Close,2×SPDT,250V AC 10A
Torque Switch	Open/Close,2×SPDT,250V AC 10A(Except PTTQE 010)
Stroke	90°±10°(0°~270° Optional)
Stall protection/	Built-in thermal protection,open 110□±5□/ close 97□±5□
Indicator	Continuous position indicator
Manual operation	Declutching mechanism,cooperate with handwheel
Self-locking device	Self-locking by worm and worm gear
Mechanical limit	2×external adjustable screws
Space heater	7-10W(110/220V AC)
Connection entry	2×PF 3/4"
Ambient temperature	- 20□~+ 60□
Lubrication	Molybdenum base grease (EP type)
Material	Steel, Aluminium alloy, Aluminium bronze, Polycarbonate
Ambient humidity	Max 90 % RH, non-condensing
Anti-vibration	X Y Z 10 g, 0.2 - 34 Hz, 30 Minute
External coating	Dry powder, epoxy polyester, High anti-corrosion

## 1.3 Optional specifications

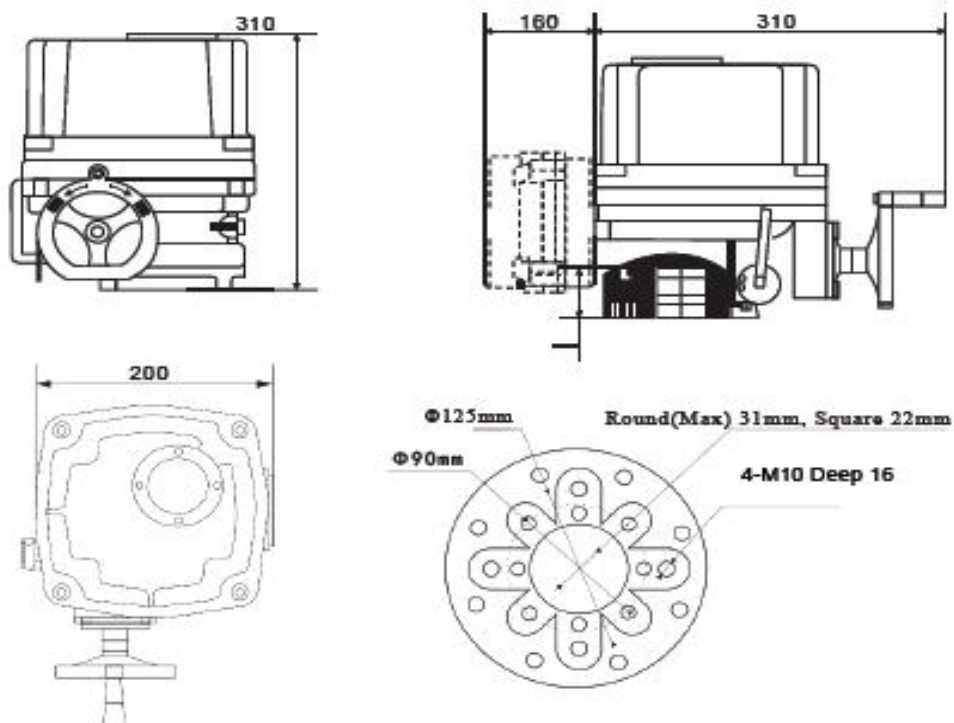
No.	Optional Scheme
1	Explosion-proof actuator ( Exd□CT 4 )
2	Water-proof Actuator(IP68,10M 250HR)
3	Potentiometer Unit(1K-10K)
4	Proportion Control Unit(INPUT,OUTPUT 4-20mA DC/1-5V/1-10V)
5	Local control units(local control/open/stop/close selector,local/remote switch)
6	Stroke 120°, 180°, 270°
7	Direct current motor(24V DC)
8	Torque switch(2×SPDT 250V AC 10A)(Except PTTQE 010)
9	Electric Current Position transfer(Output 4 - 20 m ADC)
10	Power off,the electric valve can open or close automatically
11	High Temperature Resistant Actuator ( - 10□ to + 100□ )
12	Low Temperature Resistant Actuator ( - 40°C to + 70°C)
13	Low Speed Actuator

## 2, Dimensions

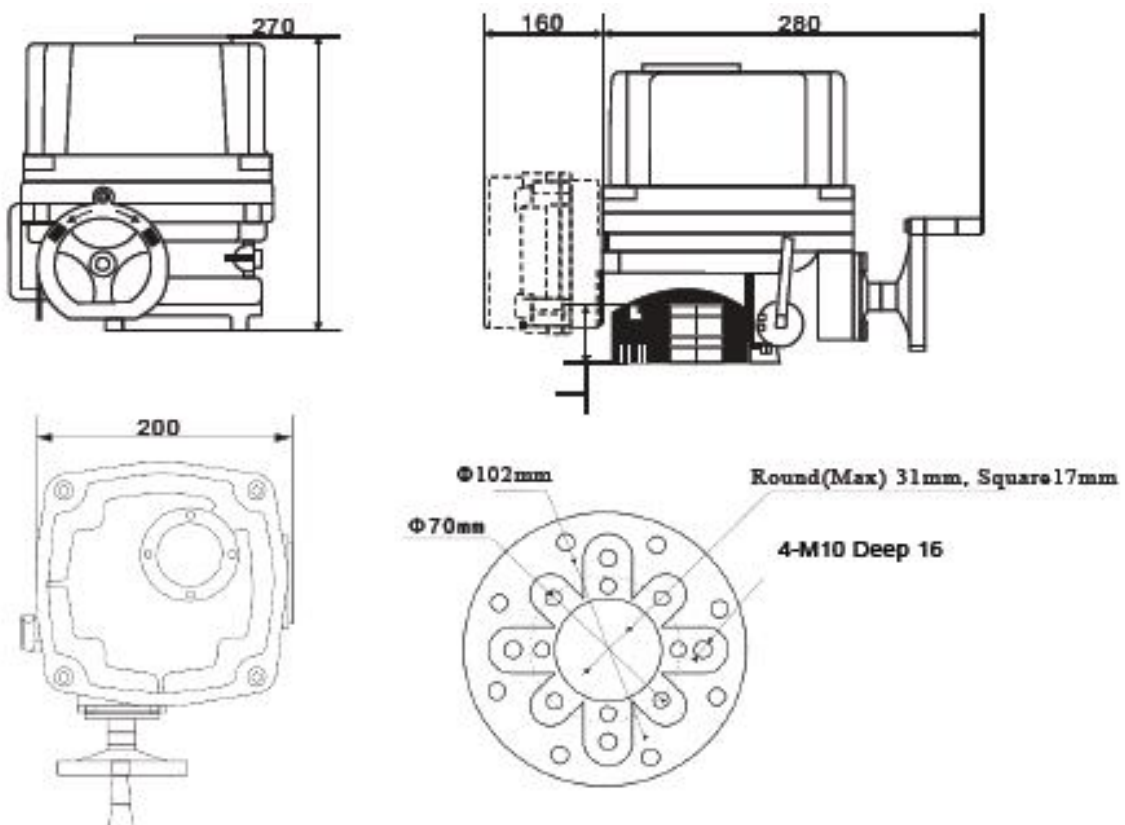
### 2.1 P TRQ 10/15 Profile and Dimensions



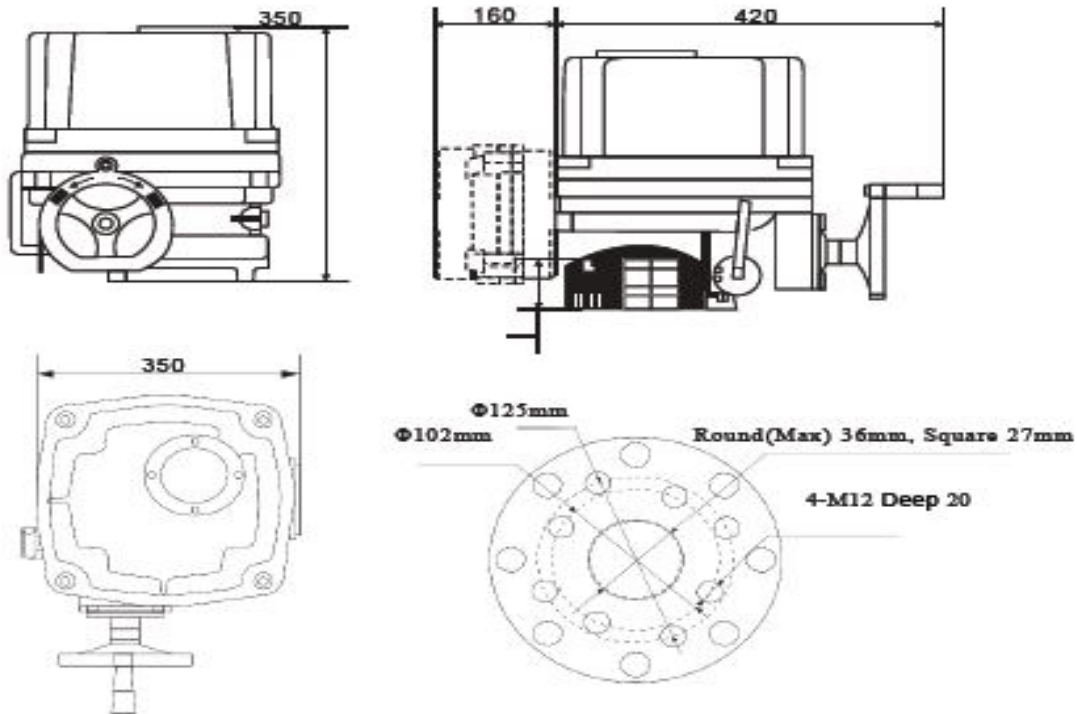
## 2.2 P TRQ- 20 Profile and Dimensions



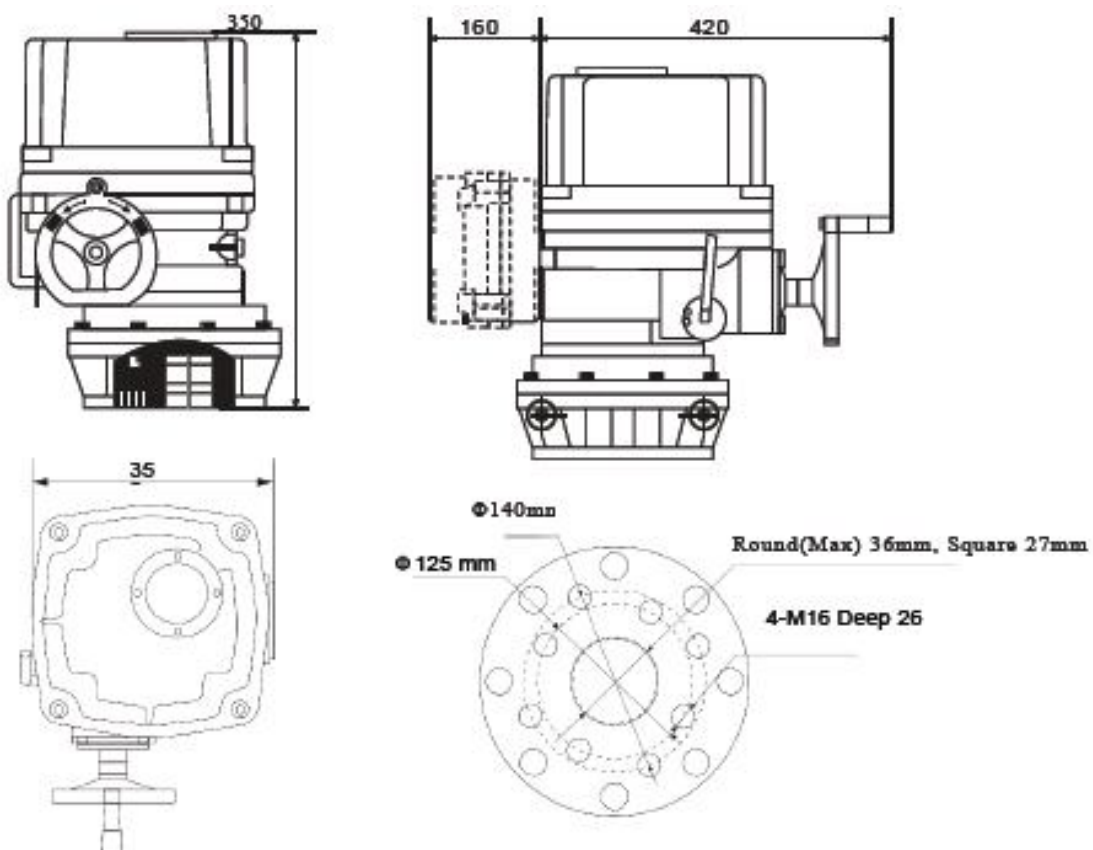
## 2.3 P TRQ- 30 / 40 / 50 Profile and Dimensions



## 2.4 P TRQ- 60 / 100 Profile and Dimensions

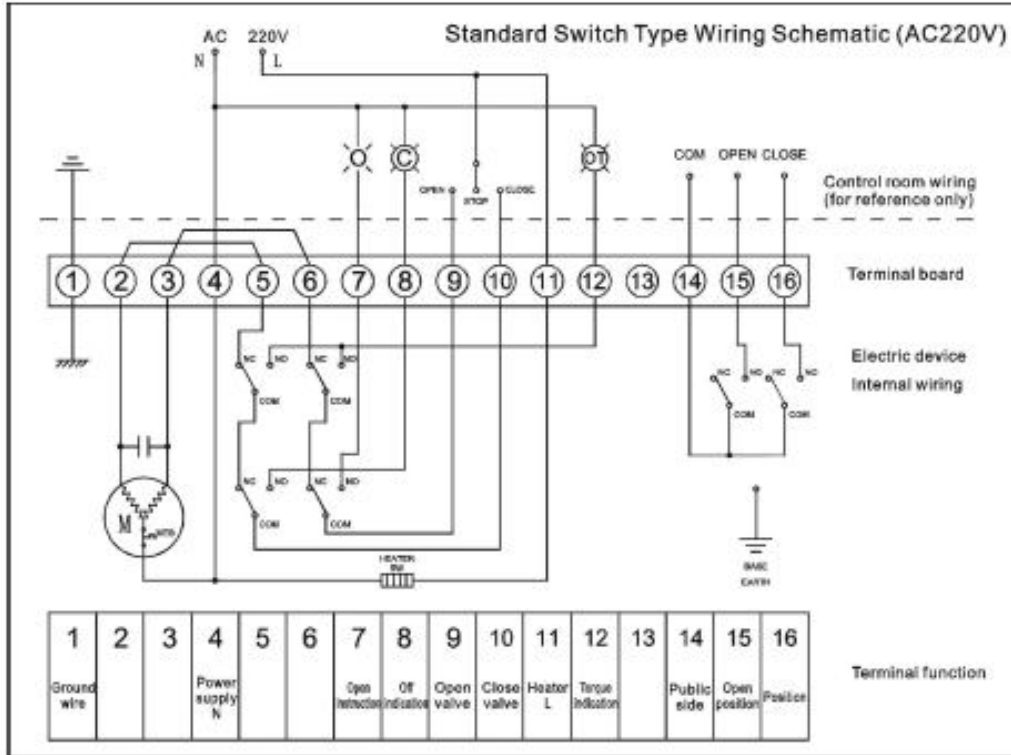


## 2.5 P TRQ- 200 Profile and Dimensions

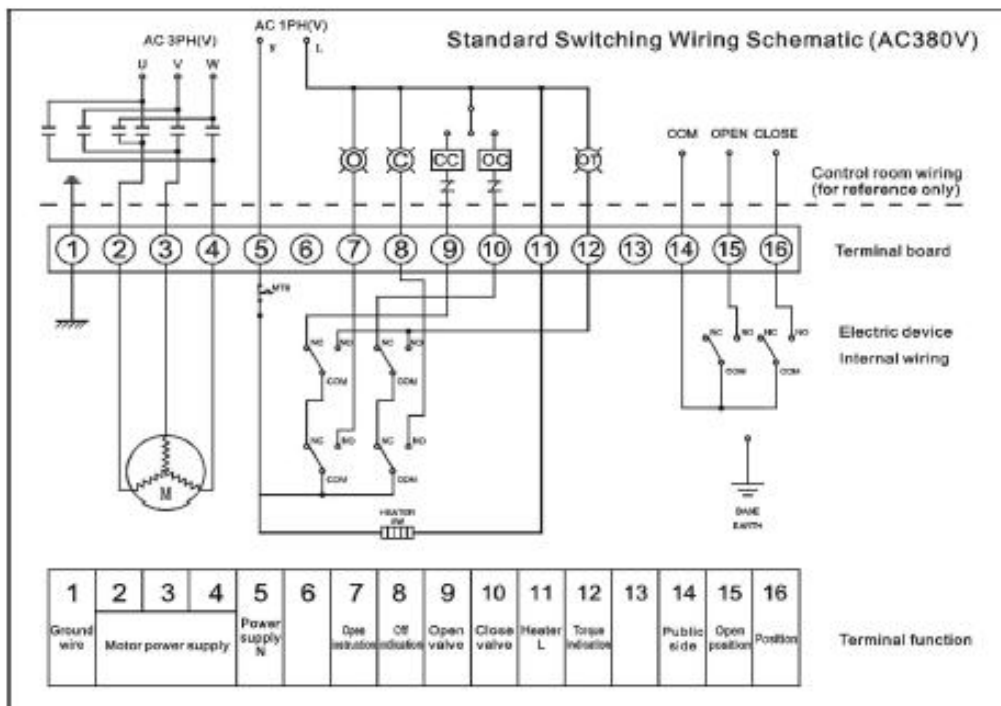


## 3, Wire Diagram

### 3.1 P TRQ-10/15 1.AC220V explosion-proof standard switch type

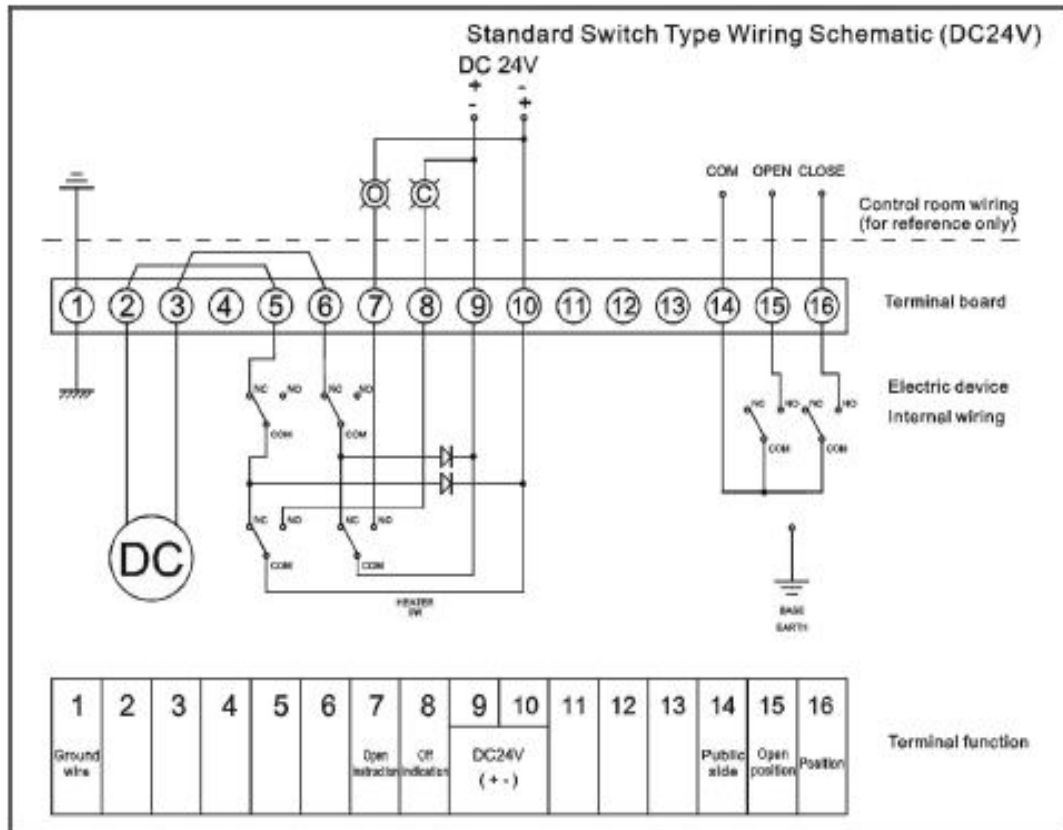


### 3.2 AC 380V explosion-proof standard switch type

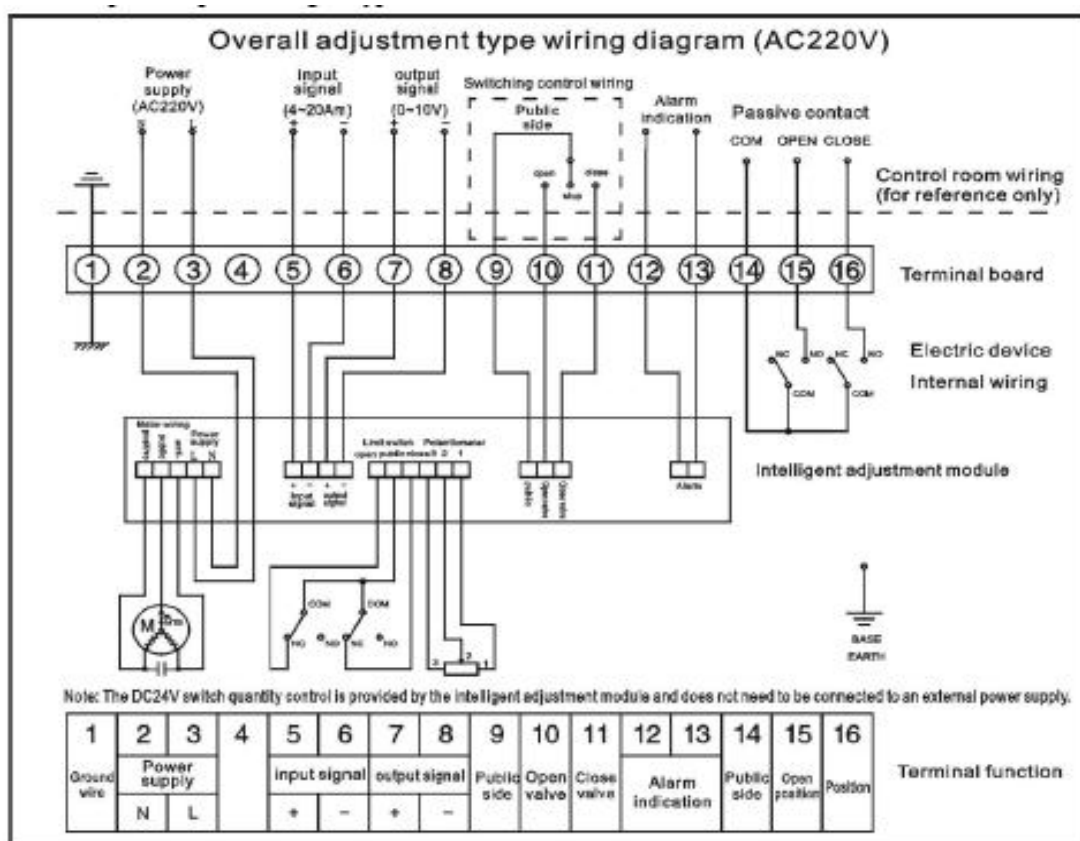




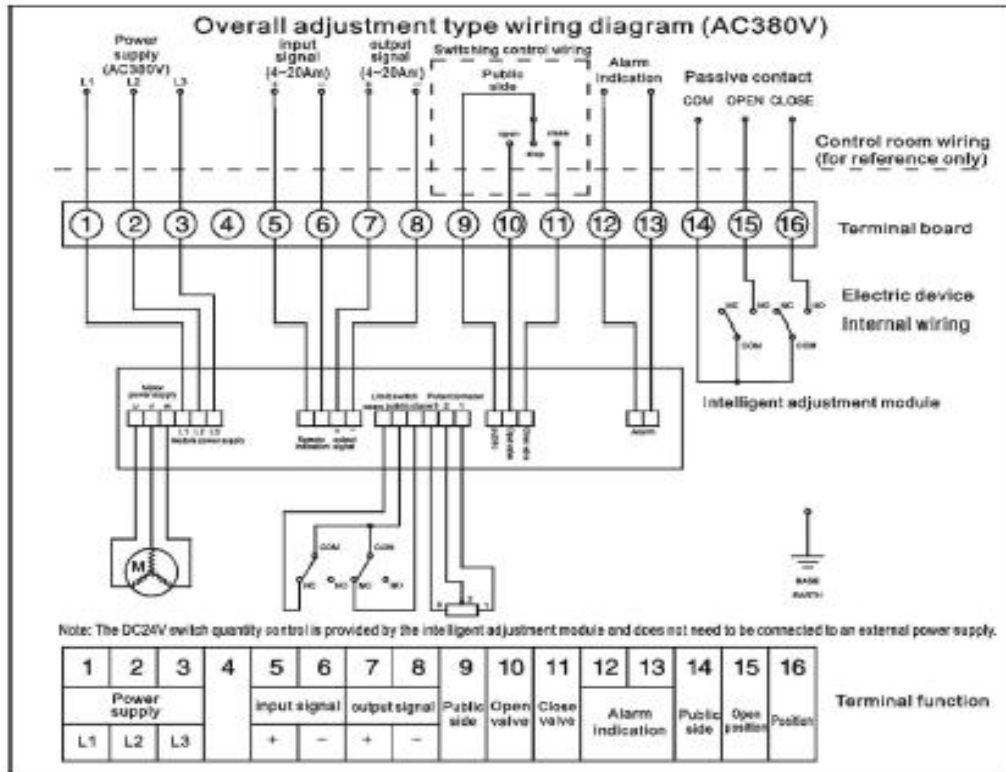
### 3.3 DC24V explosion-proof standard switch type



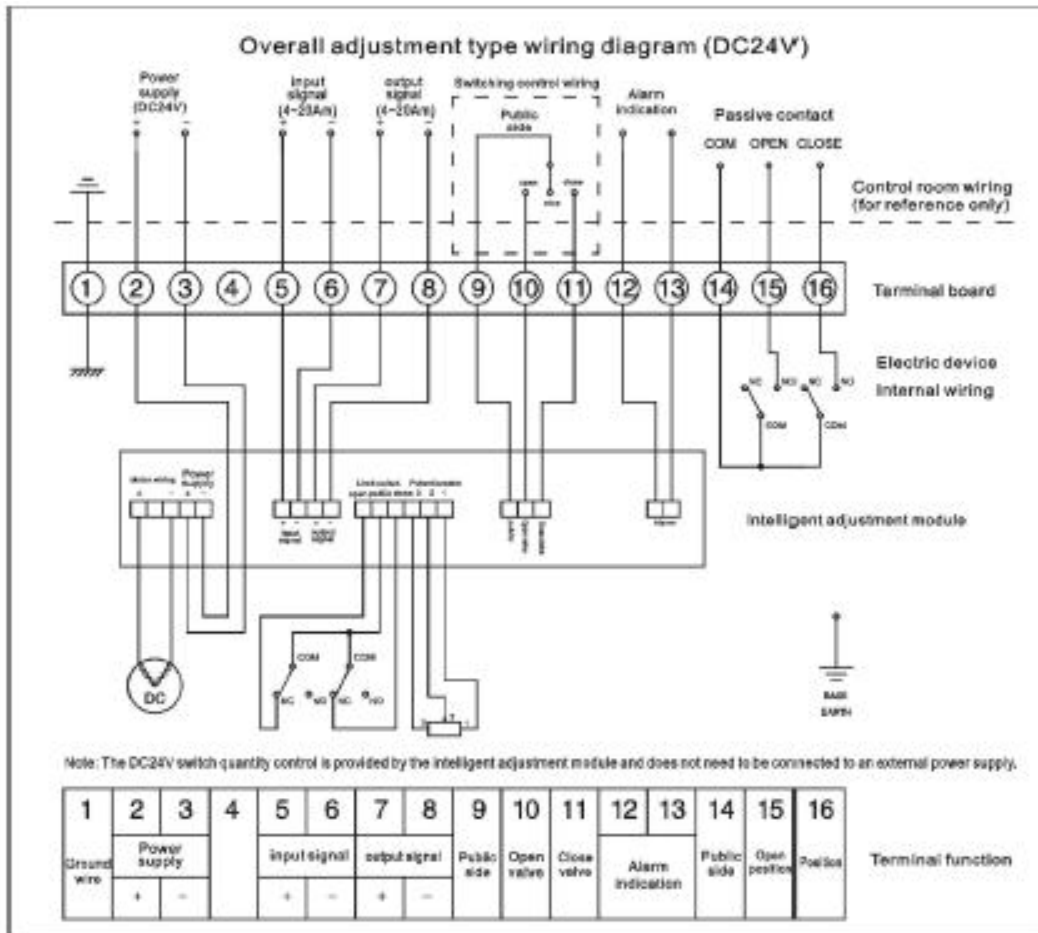
### 3.4 AC220V explosion-proof integral type



## 3.5 AC380V explosion-proof integral type



## 3.6 DC24V explosion-proof integral type







*DAVSGEMINI VALVES PVT LTD*



## **DAVS GEMINI VALVES PVT LTD**

SAHIL RESIDENCY F NO.3 BLDG A B-WING SECTOR NO-9

PLOT NO.17, MOSHI PCNTDA.PUNE 412105

[sales@davsgeminivalves.com](mailto:sales@davsgeminivalves.com)

[info@davsgeminivalves.com](mailto:info@davsgeminivalves.com)

[WEB-ADDRESS](#)

[www.davsgeminivalves.com](http://www.davsgeminivalves.com)